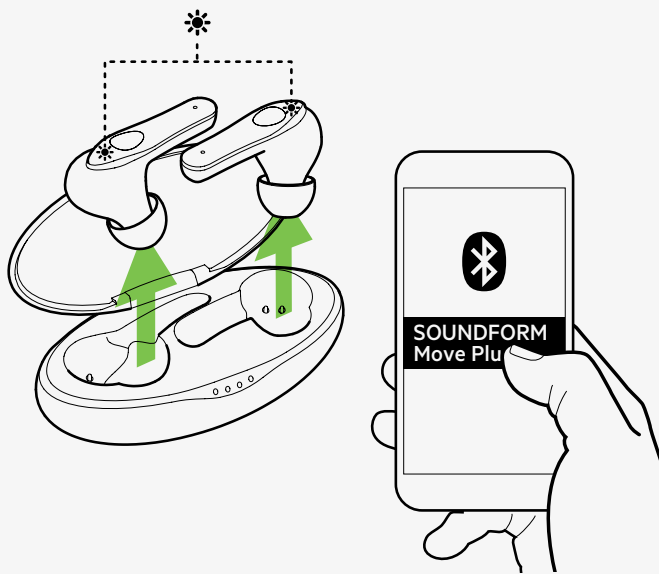




SOUNDFORM™ Move Plus True Wireless Earbuds



Pairing

Ensure that your earbuds are removed from the charging case and are in pairing mode.

NOTE: Your earbuds' lights will alternately flash between blue and white to indicate that both are on pairing mode.

Step 1: On your mobile device turn ON Bluetooth to begin searching for nearby devices.

NOTE: Steps in enabling your Bluetooth may vary depending on your device's operating system.

Step 2: When your earbuds are detected, tap on its name from the list to complete pairing.

You will hear a confirmation sound once your earbuds are paired. It will also show on your phone or tablet as a paired device.



All Day Comfort

Our True Wireless Earbuds come with three sizes (S/M/L) of silicone ear tips, providing all-day comfort and noise isolation with its sealed in-ear fit.

How to use the touch controls on the Belkin PAC002



Audio Playback

Control	Left Earbud	Right Earbud
Volume up (+)		Tap one time
Volume down (-)	Tap one time	
Pause / Resume playback	Tap two times	Tap two times
Next track		Tap three times
Previous track	Tap three times	

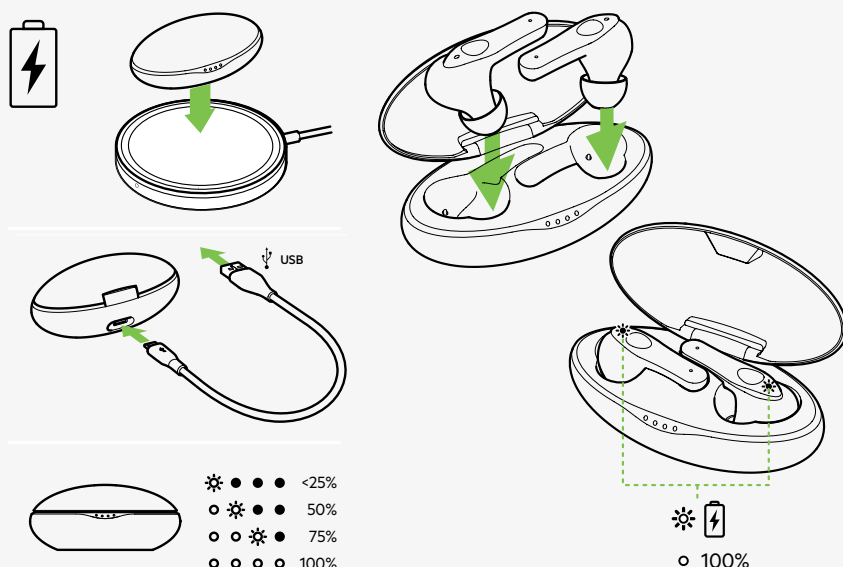
Call Handling

Control	Left Earbud	Right Earbud
Accept / End call	Tap two times	Tap two times
Reject call	Hold for 2 seconds	Hold for 2 seconds

Virtual Assistants

Control	Left Earbud	Right Earbud
Activate virtual assistant	Hold for 2 seconds	Hold for 2 seconds

SOUNDFORM™ Move Plus True Wireless Earbuds



How to reset the Belkin PAC002

